

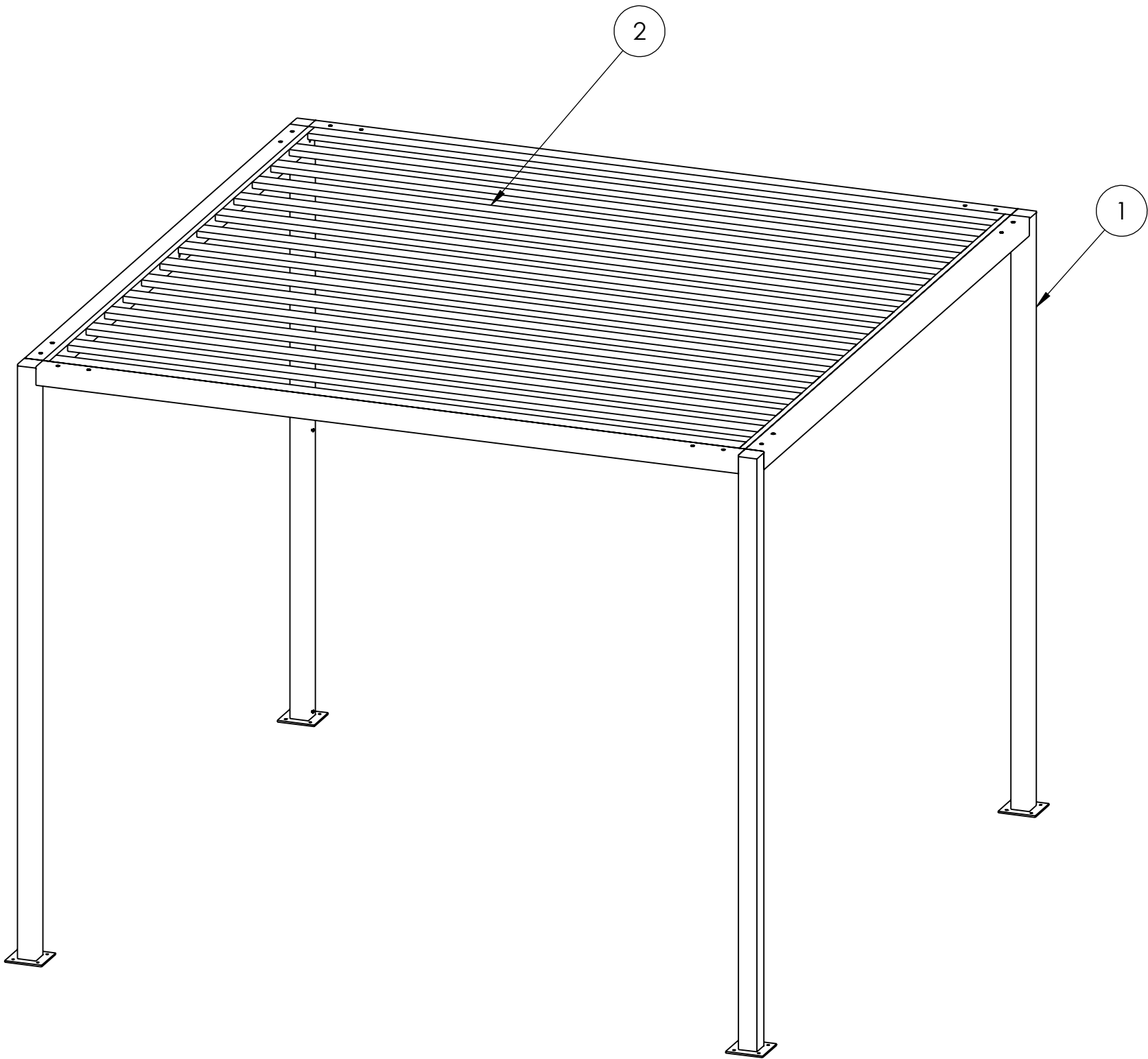
DECO S CAPE

**INSTALLATION MANUAL
BREEZE CABANA**



DECO SCAPE

INSTALLATION MANUAL BREEZE CABANA

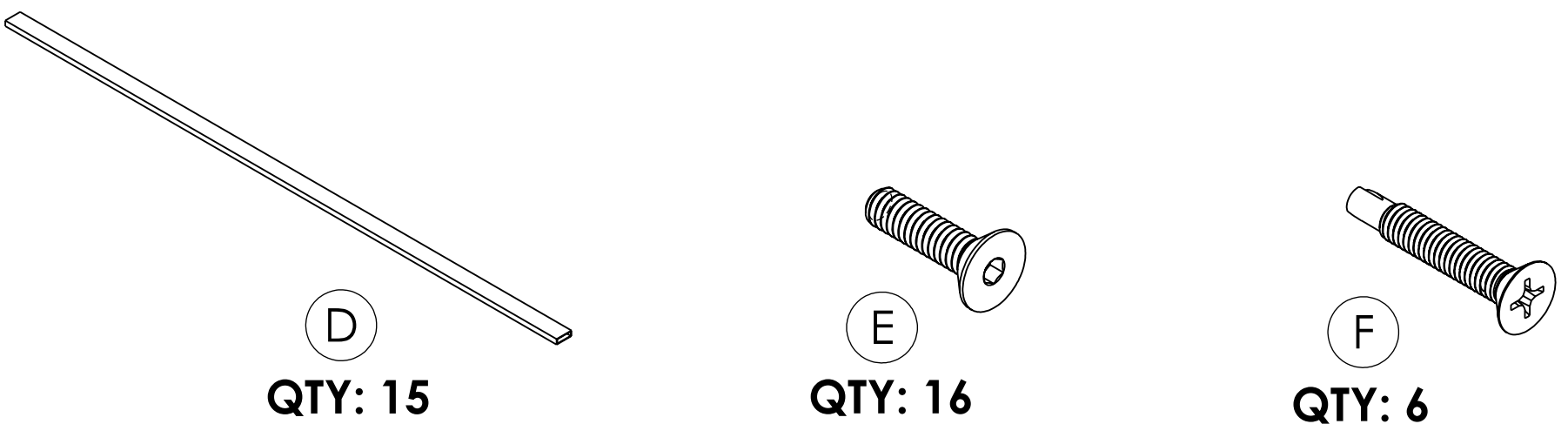
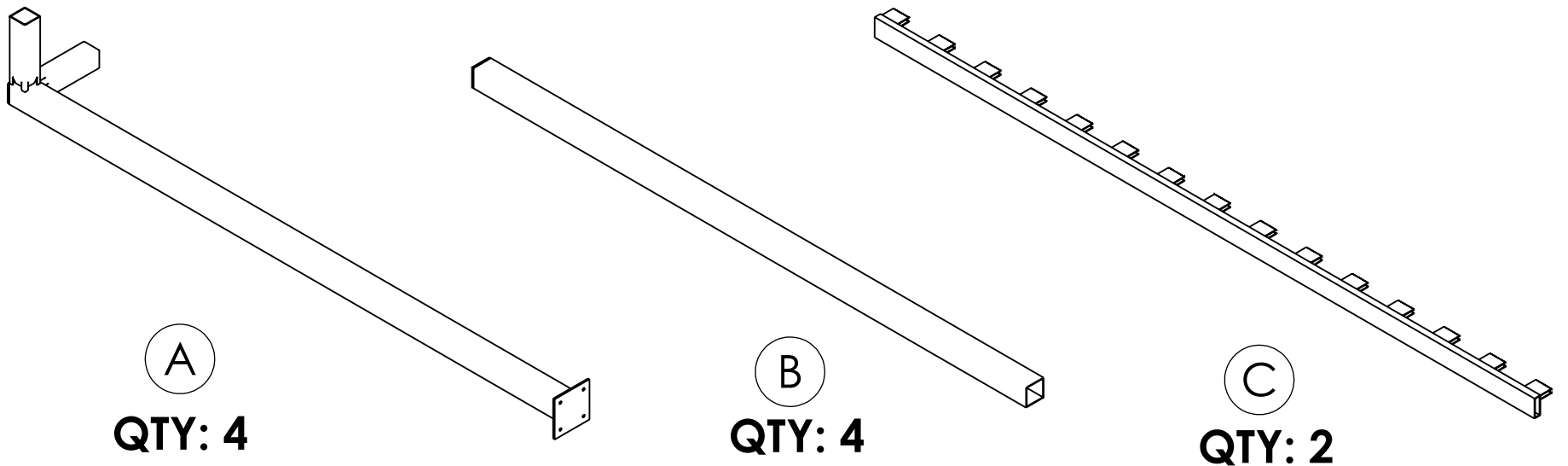


ITEM NO.	DESCRIPTION	QTY.
1	VERTICAL SUPPORT	4
2	TOP SLATS	1

NOTE(S):
- GROUND ANCHORS ARE NOT INCLUDED.



INSTALLATION MANUAL BREEZE CABANA

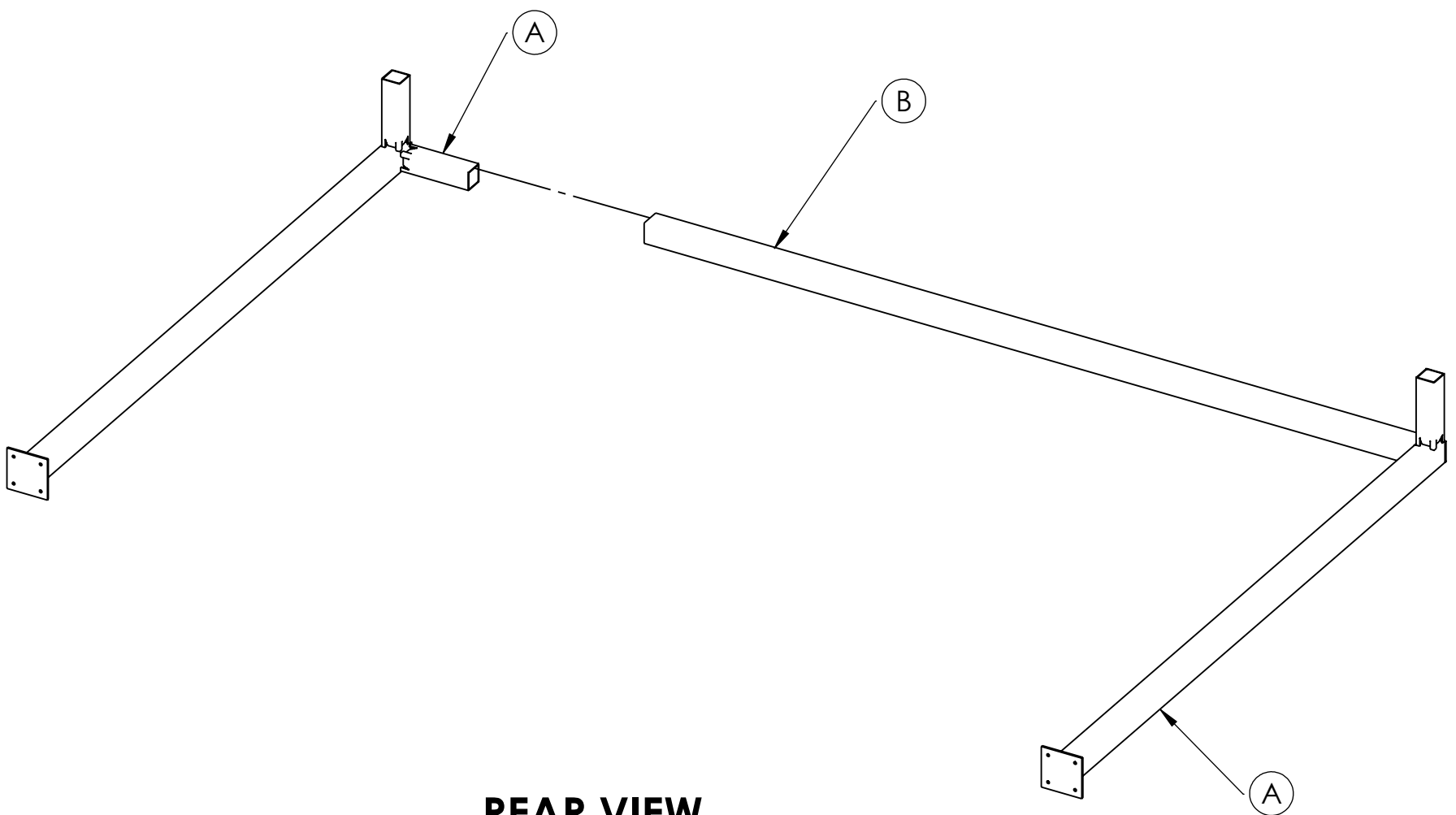


PARTS

- NOTE(S):
- IDENTIFY ALL PARTS PACKED IN THE CARTON AGAINST THE PARTS LIST
 - REMOVE ALL THE PROTECTIVE MATERIAL CAREFULLY AND **DO NOT** USE A KNIFE TO PREVENT SCRACHING OF THE FURNITURE.



INSTALLATION MANUAL BREEZE CABANA



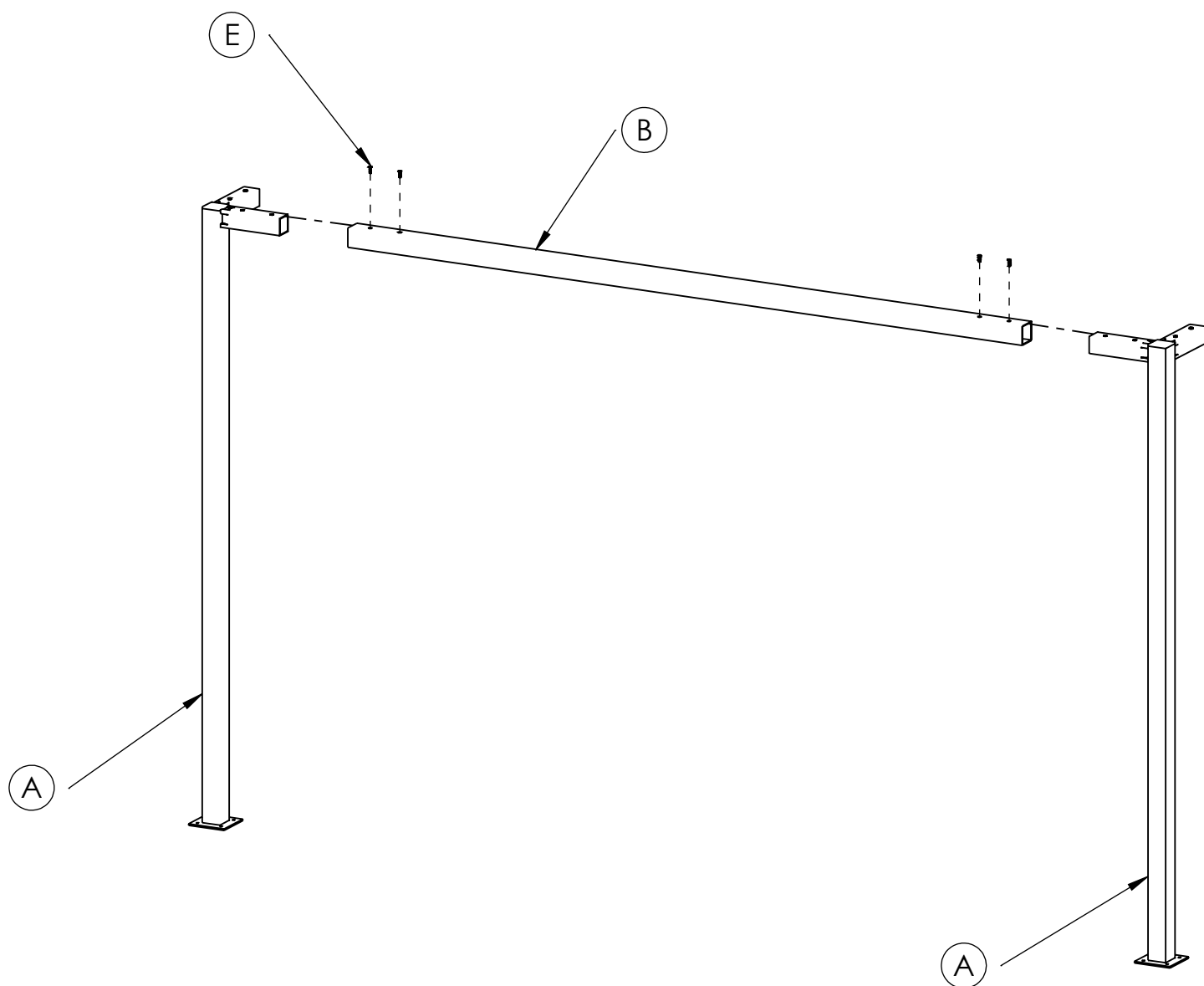
REAR VIEW

STEP 1

- ASSEMBLE ON A SOFT, NON-ABRASIVE SURFACE, SUCH AS A BLANKET OR CARDBOARD TO AVOID DAMAGING THE CABANA. THIS IS A TWO PERSON BUILD SO FIND ASISTANCE TO ASSEMBLE.
- LAYOUT PARTS AS SHOWN.
- SLID VERTICAL SUPPORT INTO OPENING ON OPPOSITE SIDE AND SECURE WITH FLAT HEAD SCREW 1/4"-20 X 1" Lg AND TIGHTEN. (AS SHOWN)



INSTALLATION MANUAL BREEZE CABANA



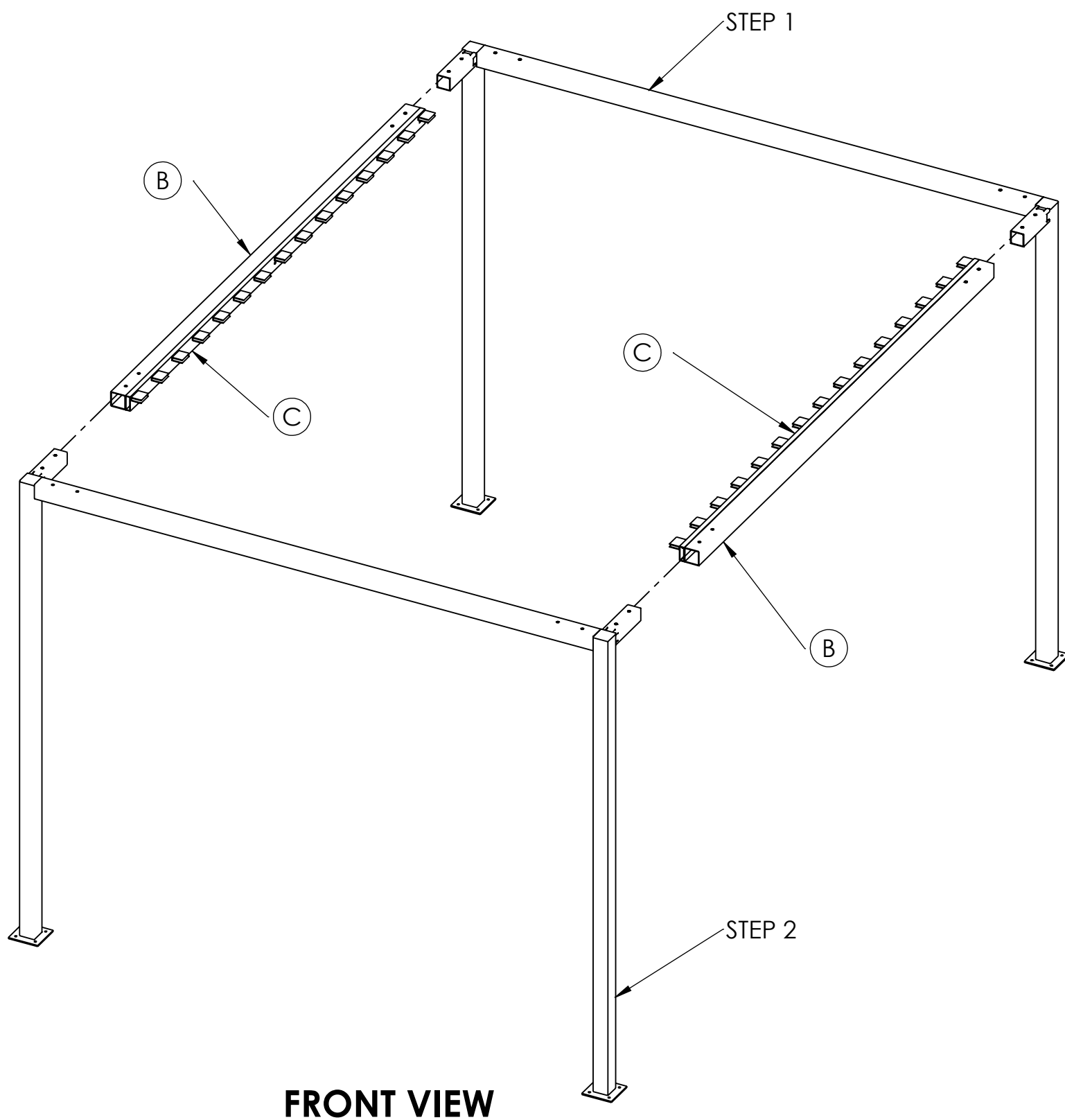
FRONT VIEW

STEP 2

- INSERT ITEM B INTO ITEM A ON BOTH SIDES AND SECURE WITH
FLAT HAED SCREW 1/4"-20 X 1" Lg. (AS SHOWN)



INSTALLATION MANUAL BREEZE CABANA

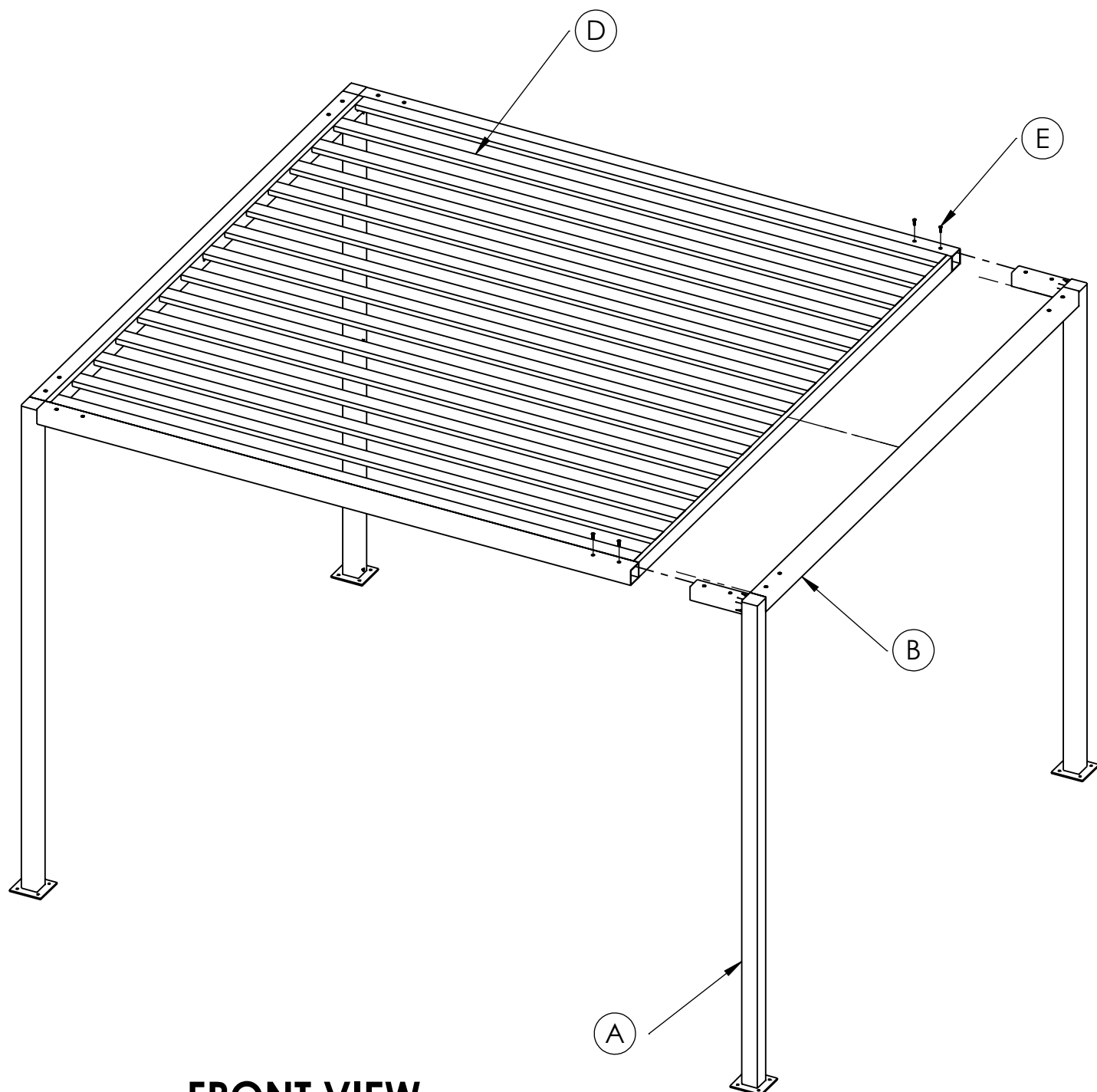


STEP 3

- ATTACH ITEM B INTO STEPS 1 AND 2 AND SECURE WITH FLAT HEAD SCREW 1/4"-20 X 1" Lg. (AS SHOWN)
- ATTACH ITEM C TO ITEM B AND SECURE WITH FLAT HEAD SCREW 1/4"-20 DRILLING SCREW. (AS SHOWN)



INSTALLATION MANUAL BREEZE CABANA

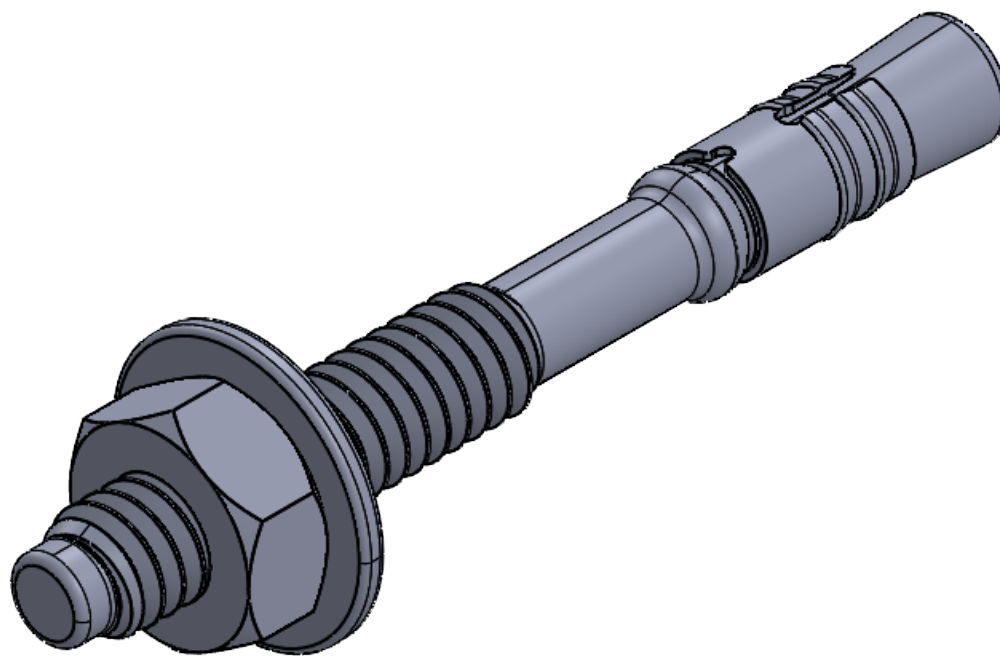


FRONT VIEW

STEP 4

- SEPERATE ITEM A AND B SLIGHTLY TO ALOUD ITEM D TO BE SET IN PLACE. (AS SHOWN)
- SECURE AS BEFORE WITH FLAT HEAD SCREW 1/4"-20 X 1" Lg.

**DECOSCAPE RECOMMENDED ANCHOR:
RED HED WEDGE ANCHOR,
2-1/4" OVERALL LG, 1/4" DIA, 1/4-20 THREAD SIZE**



PART NUMBER: 15X085
MFR MODEL: SWW-1422

NOTE: (4) REQUIRED PER LEG.
WEDGE ANCHOR NOT SUPPLIED BY DECOSCAPE.
INSTALLER MUST VERIFY LOCAL AND STATE REQUIREMENTS
OF WEDGE ANCHOR BEFORE INSTALLATION.