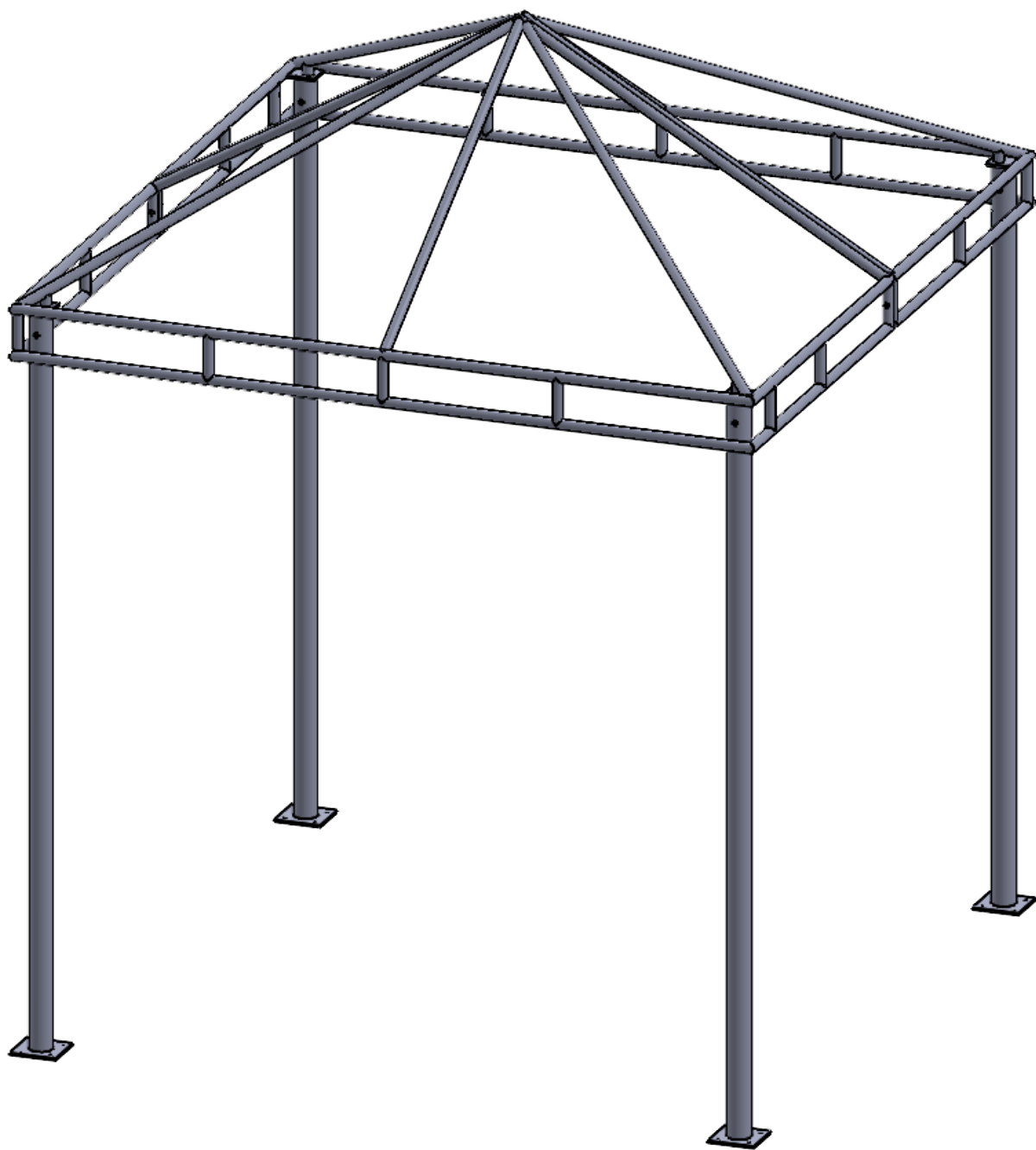


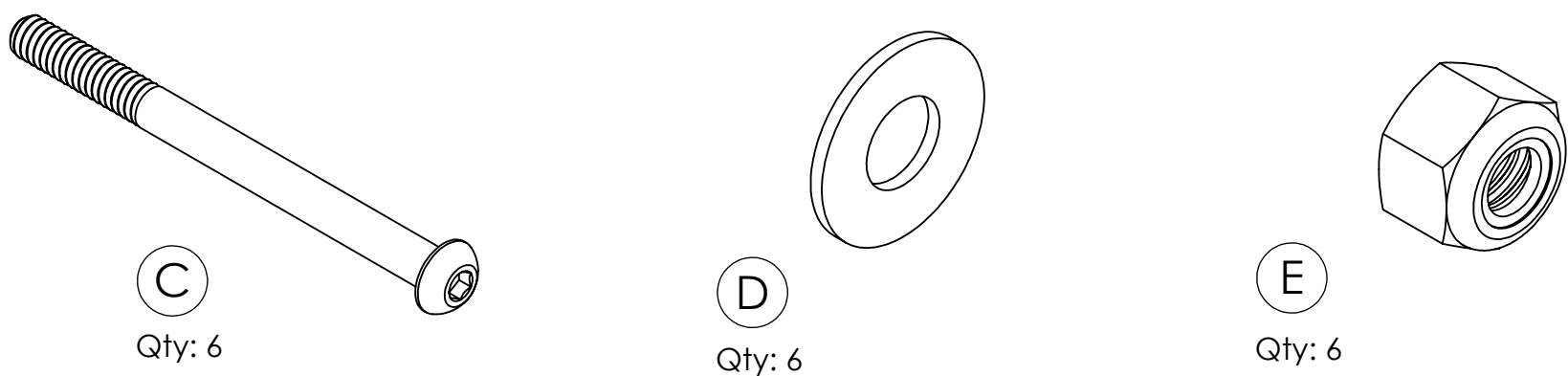
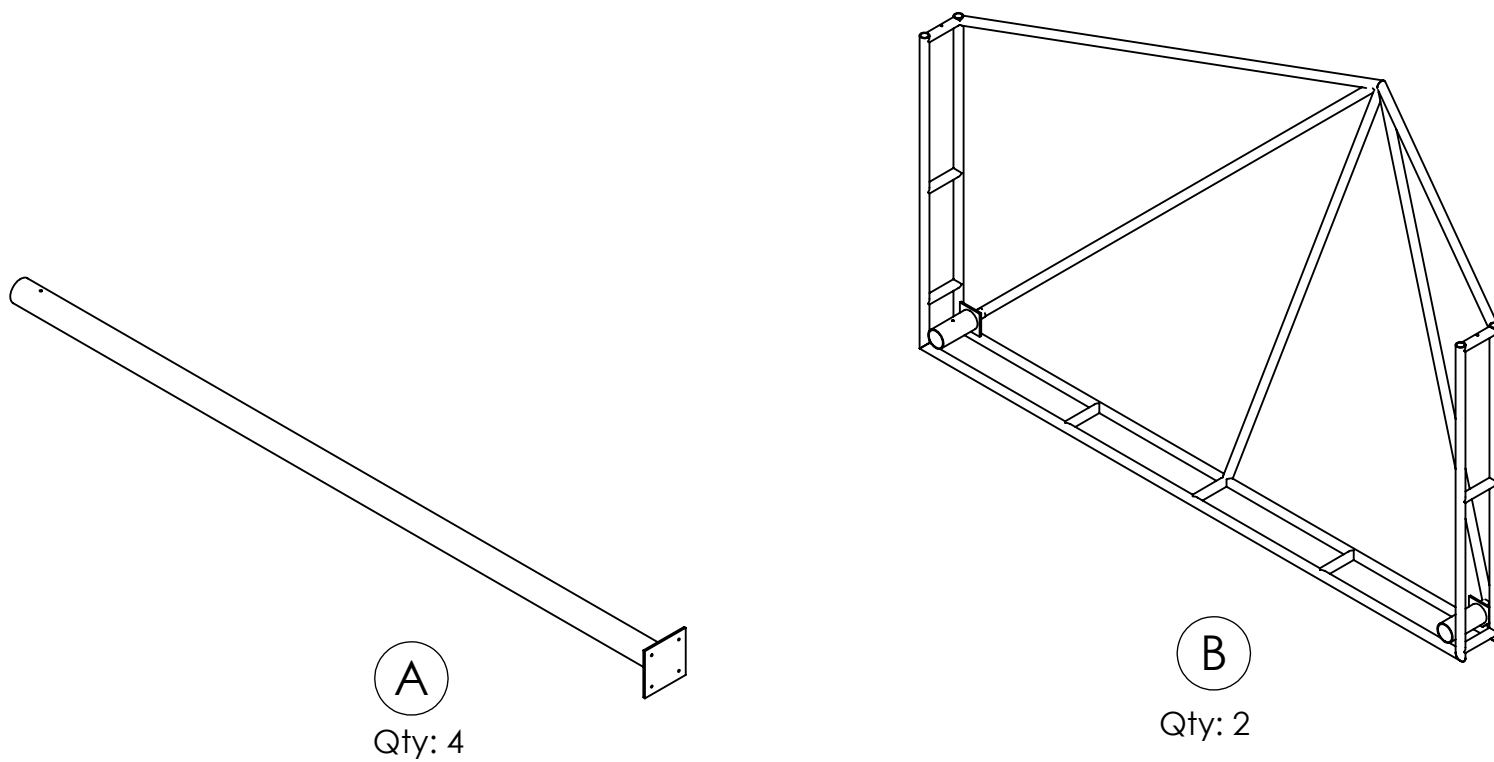


INSTALLATION MANUAL CABANA STANDARD



DECO SCAPE

INSTALLATION MANUAL OASIS CABANA



NOTE:

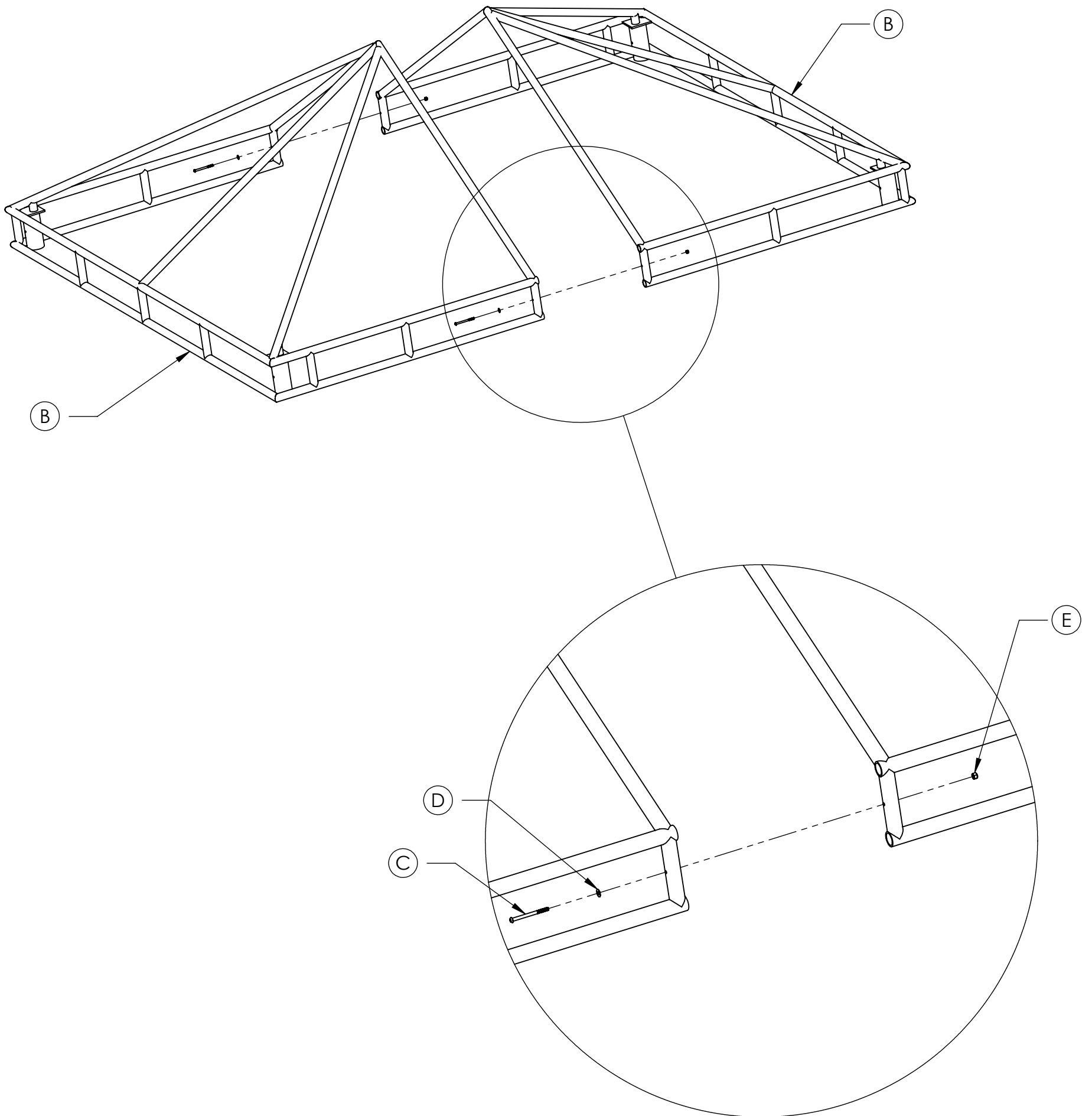
- THIS IS A TWO PERSON BUILD.

- BEFORE ASSEMBLING CABANA CLEAN SURFACE AREA AND MAKE SURE TO PLACE A CARDBOARD OR CLOTH ON THE FLOOR AS NOT TO SCRACH FLOORS.

- MAKE SURE ANCHOR SCREWS HAVE BEEN INSERTED IN GROUND.
(ANCHORS BOLTS NOT INCLUDED UNLESS REQUESTED)

DECO SCAPE

INSTALLATION MANUAL OASIS CABANA

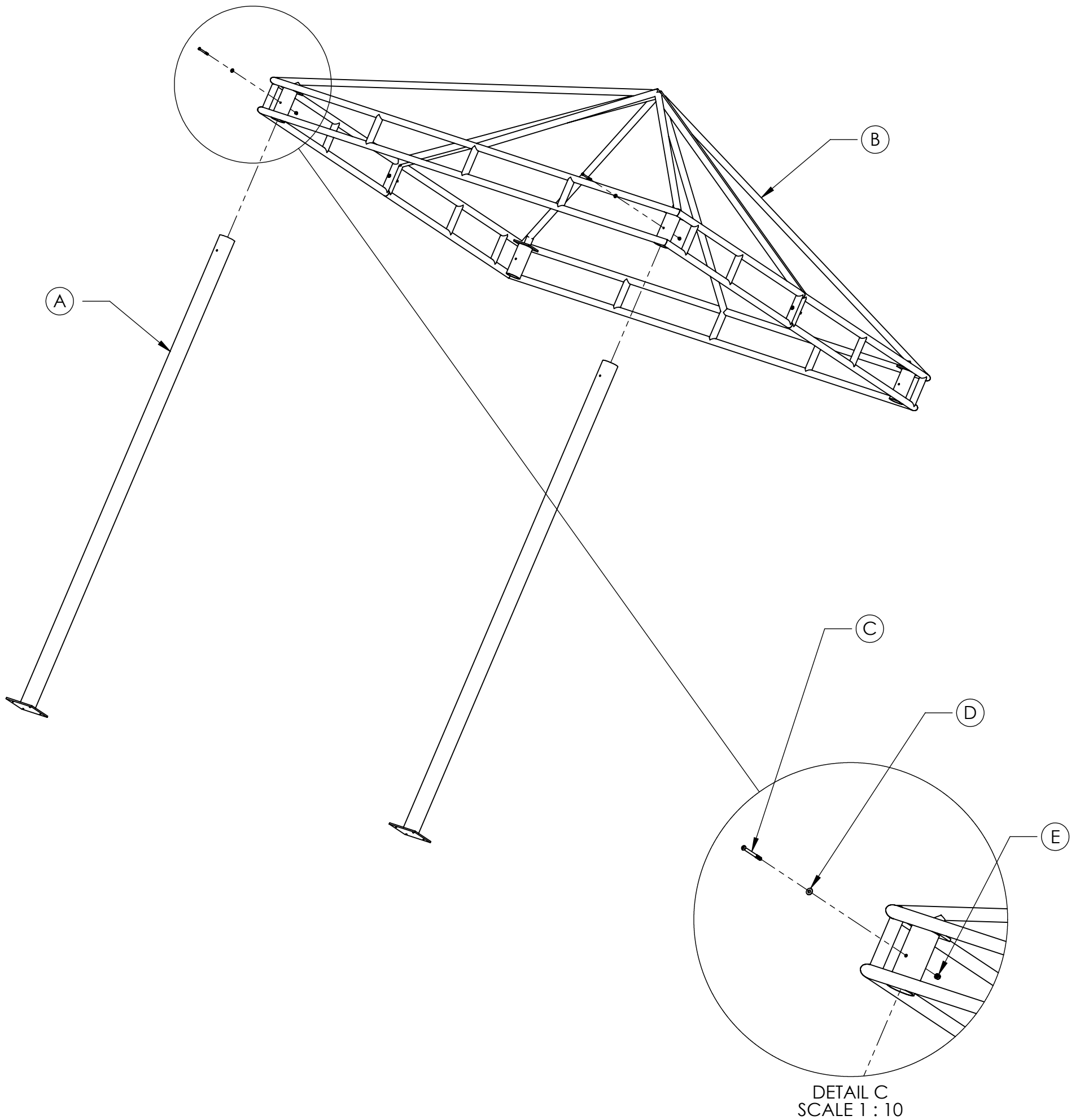


TO BEGIN ASSMBLY:

- PLACE ITEM (B) ON THE GROUND.(AS SHOWN)
- LOCATE SCREW HOLES AND PLACE HHDS #10 X 3" LG SCREW IN HOLE AND TIGHTEN.

DETAIL D
SCALE 1 : 9

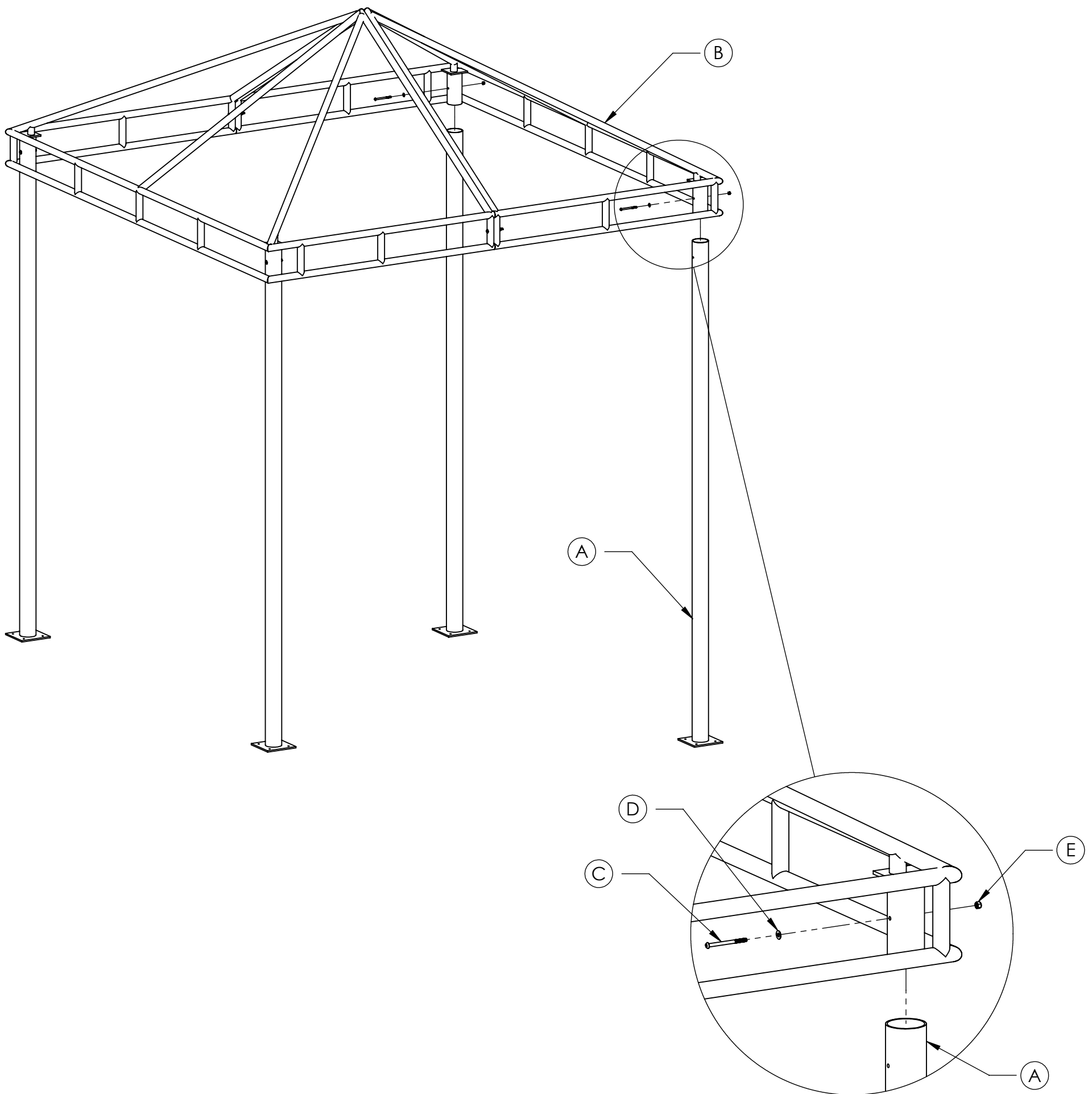
INSTALLATION MANUAL OASIS CABANA



NOTE:
- LINE UP BOTH LEGS BY LINING UP THE HOLES AND INSERTING THE SCREWS.
(AS SHOWN)

DECO SCAPE

INSTALLATION MANUAL OASIS CABANA



NOTE:
- LINE UP BOTH LEGS BY LINING UP THE HOLES AND INSERTING THE SCREWS.
(AS SHOWN)

DETAIL E
SCALE 1 : 8